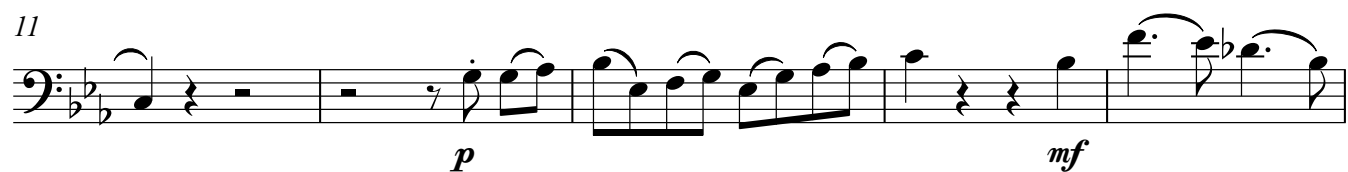
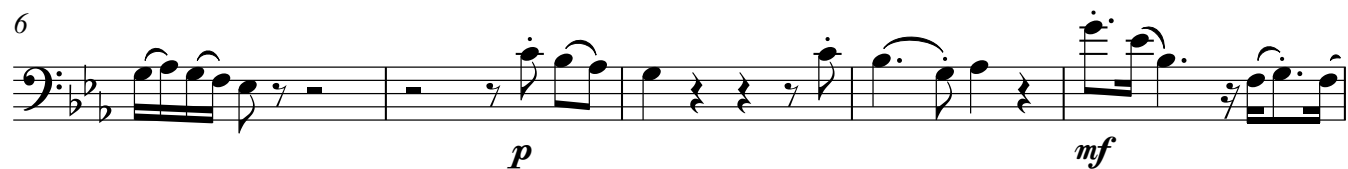


## Fagott

## 1. Satz

Allegro moderato ♩ = 100



Fagott  
49

Fagott

54

59

64

68

72

76

82

94

103

110

## 2.Satz

**Adagio** ♩ = 62

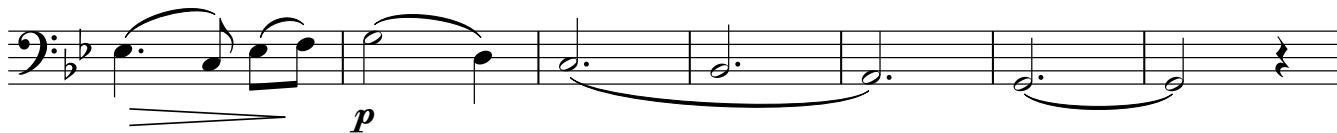
6

$p$

**rit.** \_ \_ \_ \_ \_

$p$

117 - - - - a tempo ♩ = 62



124



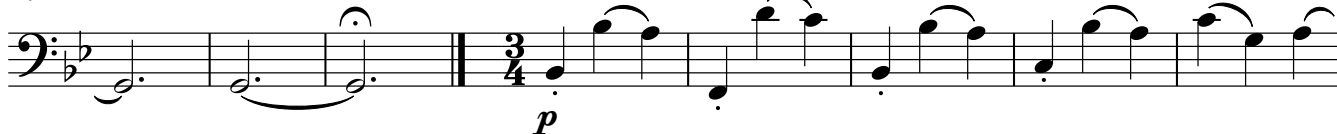
130



## 3. Satz

rit. - - - -

141

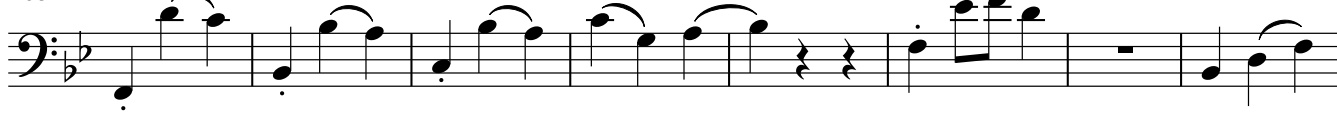


Presto ♩ = 60

149



163



171

*f*

182



190



197

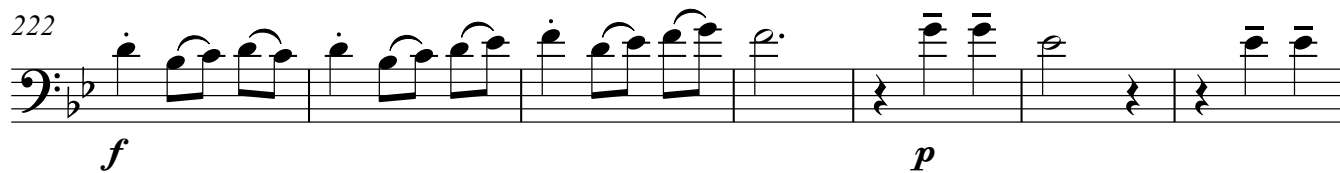


214



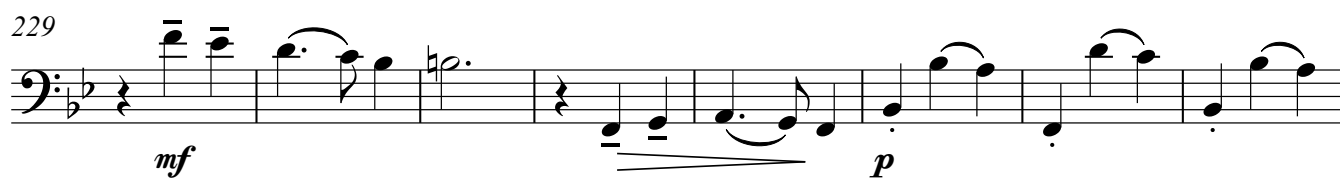
## Fagott

222



*f* *p*

229



*mf* *p*

237



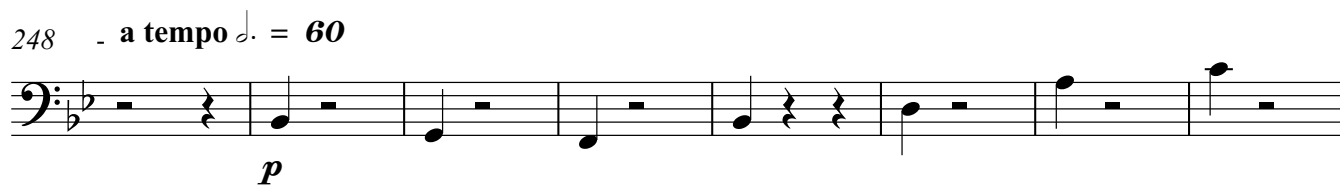
*p*

243



*p* rit.

248 a tempo  $\text{♩} = 60$



*p*

256



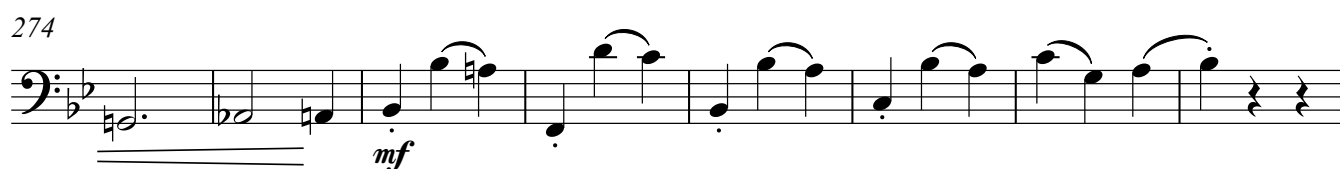
*mf*

266



*p*

274



*mf*

282



*p*

289



*p*

295



*ff* *p*

Fagott

Fagott

5

Adagio  $\text{♩} = 52$ 

314



321



327



337



347



352

Allegro  $\text{♩} = 80$ 

360



[illegible]

371

371

[illegible]

381

381

382

383

384

385

388

[illegible][illegible]

The bass line of 'The Rose Tree' is written in 3/4 time, key of B-flat major. It begins with a treble clef and a key signature of two flats. The melody consists of eighth and quarter notes, with a repeat sign after the first measure. The second measure is a whole note. The third measure is a quarter note. The fourth measure is a quarter note. The fifth measure is a quarter note. The sixth measure is a quarter note. The seventh measure is a quarter note. The eighth measure is a quarter note. The ninth measure is a quarter note. The tenth measure is a quarter note. The eleventh measure is a quarter note. The twelfth measure is a quarter note. The thirteenth measure is a quarter note. The fourteenth measure is a quarter note. The fifteenth measure is a quarter note. The sixteenth measure is a quarter note. The seventeenth measure is a quarter note. The eighteenth measure is a quarter note. The nineteenth measure is a quarter note. The twentieth measure is a quarter note. The twenty-first measure is a quarter note. The twenty-second measure is a quarter note. The twenty-third measure is a quarter note. The twenty-fourth measure is a quarter note. The twenty-fifth measure is a quarter note. The twenty-sixth measure is a quarter note. The twenty-seventh measure is a quarter note. The twenty-eighth measure is a quarter note. The twenty-ninth measure is a quarter note. The thirtieth measure is a quarter note. The thirty-first measure is a quarter note. The thirty-second measure is a quarter note. The thirty-third measure is a quarter note. The thirty-fourth measure is a quarter note. The thirty-fifth measure is a quarter note. The thirty-sixth measure is a quarter note. The thirty-seventh measure is a quarter note. The thirty-eighth measure is a quarter note. The thirty-ninth measure is a quarter note. The fortieth measure is a quarter note. The forty-first measure is a quarter note. The forty-second measure is a quarter note. The forty-third measure is a quarter note. The forty-fourth measure is a quarter note. The forty-fifth measure is a quarter note. The forty-sixth measure is a quarter note. The forty-seventh measure is a quarter note. The forty-eighth measure is a quarter note. The forty-ninth measure is a quarter note. The fiftieth measure is a quarter note. The fifty-first measure is a quarter note. The fifty-second measure is a quarter note. The fifty-third measure is a quarter note. The fifty-fourth measure is a quarter note. The fifty-fifth measure is a quarter note. The fifty-sixth measure is a quarter note. The fifty-seventh measure is a quarter note. The fifty-eighth measure is a quarter note. The fifty-ninth measure is a quarter note. The sixtieth measure is a quarter note. The sixty-first measure is a quarter note. The sixty-second measure is a quarter note. The sixty-third measure is a quarter note. The sixty-fourth measure is a quarter note. The sixty-fifth measure is a quarter note. The sixty-sixth measure is a quarter note. The sixty-seventh measure is a quarter note. The sixty-eighth measure is a quarter note. The sixty-ninth measure is a quarter note. The seventieth measure is a quarter note. The seventy-first measure is a quarter note. The seventy-second measure is a quarter note. The seventy-third measure is a quarter note. The seventy-fourth measure is a quarter note. The seventy-fifth measure is a quarter note. The seventy-sixth measure is a quarter note. The seventy-seventh measure is a quarter note. The seventy-eighth measure is a quarter note. The seventy-ninth measure is a quarter note. The eightieth measure is a quarter note. The eighty-first measure is a quarter note. The eighty-second measure is a quarter note. The eighty-third measure is a quarter note. The eighty-fourth measure is a quarter note. The eighty-fifth measure is a quarter note. The eighty-sixth measure is a quarter note. The eighty-seventh measure is a quarter note. The eighty-eighth measure is a quarter note. The eighty-ninth measure is a quarter note. The ninetieth measure is a quarter note. The ninety-first measure is a quarter note. The ninety-second measure is a quarter note. The ninety-third measure is a quarter note. The ninety-fourth measure is a quarter note. The ninety-fifth measure is a quarter note. The ninety-sixth measure is a quarter note. The ninety-seventh measure is a quarter note. The ninety-eighth measure is a quarter note. The ninety-ninth measure is a quarter note. The hundredth measure is a quarter note.

The bass line of 'The Rose Tree' is written on a single staff in 3/4 time. It begins with a treble clef and a key signature of one flat (B-flat). The melody starts on a half note G2, followed by a quarter note F2, and then a half note E2. This is followed by a quarter rest, then a half note D2, and finally a half note C2. The piece ends with a double bar line.

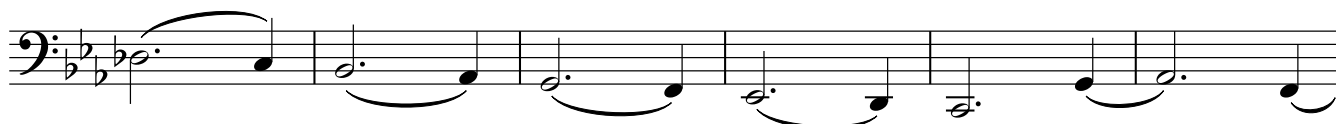
[illegible]

## Fagott

7

428

rit. . . . .

434 . . . . a tempo  $\text{♩} = 80$ 

439



446



451



456



461



469



473



15'39,3"